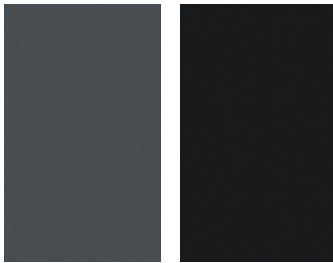
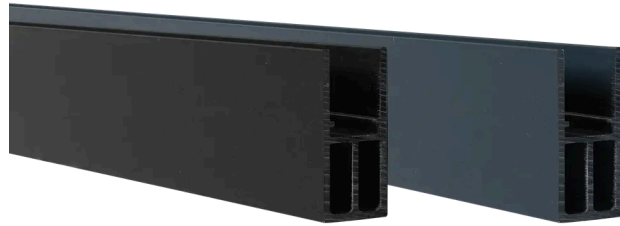


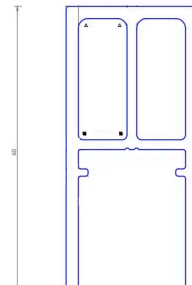


BOSTON - REINFORCED BOTTOM PROFILE

- Allows vertical slats installation
- Accommodates and secures boards
- Anthracite grey and black
- Powder-coating Qualicoat® and Qualimarine® with textured effect
- Used as a pin to ensure post-to-post spacing



Anthracite grey RAL7016 Black RAL9005 RAL7016



A reinforced rail for vertical boards installation

The low reinforced rail has been specially designed and engineered to allow the vertical installation of Premium and Modern composite boards. Thanks to a consolidated structure, it ensures a perfect holding of the fence over time, while maintaining a light and refined aesthetic.

Held to the posts with connectors, the reinforced rail ensures a constant spacing between the posts and can be cut. It benefits from Qualicoat® and Qualimarine® treatments and is available in two colours: anthracite grey and black.



Environment

LIFETIME	> 20 years
GHG EMISSIONS	8.21 (GES)
RECYCLED MATERIAL	Aluminium
END OF LIFE RECYCLABILITY	0 %



BOSTON - REINFORCED BOTTOM PROFILE

Characteristics

Main material	Aluminium
Material thickness (mm)	2.5
Finishing	Coating
Cutable	oui
	Fencing

Logistics Data

REF	EAN CODE	DESIGNATION	WEIGHT (KG)	PACK 1	PACK 2
FD2141	3700421821419	BOSTON - Reinforced bottom profile 25x40x1750mm - Grey RAL7016	0.99	300	10
FD2142	3700421821426	BOSTON - Reinforced bottom profile 25x40x1750mm - Black RAL7016	0.99	300	10

Associated products



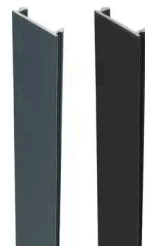
**BOSTON - ALUMINIUM POST
60X70MM**



**BOSTON - SET OF 4
CONNECTORS WITH
HARDWARE**



**BOSTON - ALUMINIUM POST
75X75MM**



**BOSTON - ALUMINIUM
FINISHING STRIP 6X24MM**