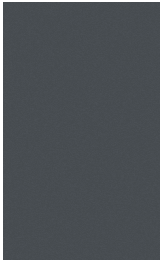
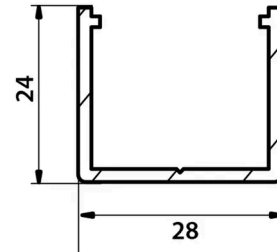


## BOSTON - SET WALL PROFILES (X2) WITH HARDWARE

- Fits onto wall, post or pillar
- Includes two wall profiles
- Includes cap and screws
- Anthracite grey rs

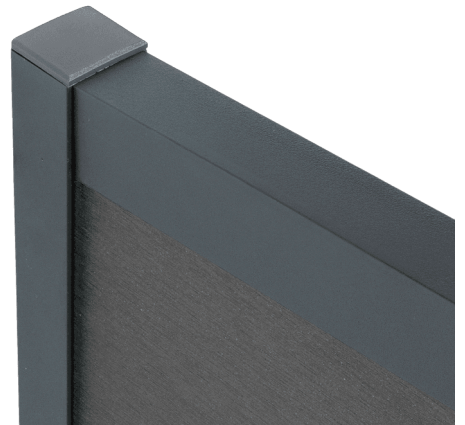


Anthracite grey  
RAL7016



### Fence off a wall with the wall profile

Wall profiles allow you to start your fence from the wall, or fix it between two pillars. They can be filled with the same material as the 75×75mm post. They come complete with wall-mounting hardware and caps.



### Environment

LIFETIME	> 20 years
GHG EMISSIONS	8.21 (GES)
RECYCLED MATERIAL	Aluminium
END OF LIFE RECYCLABILITY	40 %



## BOSTON - SET WALL PROFILES (X2) WITH HARDV

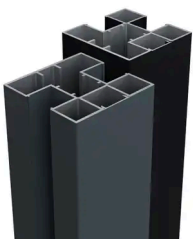
### Characteristics

Main material	Aluminium
Material thickness (mm)	1.8
Finishing	Coating
Screws included	oui
Cuttable	oui
	Fencing

### Logistics Data

REF	EAN CODE	DESIGNATION	WEIGHT (KG)	PACK 1	PACK 2
2526	3700421812783	BOSTON - Wall profile 28x24x1900mm (2 pieces) + 12 screws 4.8x16mm + plugs - Grey RAL7016	1.5	100	1
2526	3701753617145	BOSTON - Wall profile 28x24x1900mm (2 pieces) + 12 screws 4.8x16mm + plugs - Grey RAL7016	0.71	100	1

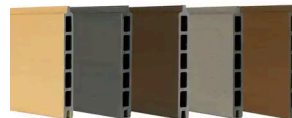
### Associated products



**BOSTON - ALUMINIUM POST  
75X75MM**



**BOSTON - OPALE ALUMINIUM  
BOARD**



**BOSTON - PREMIUM WPC  
BOARD**



**BOSTON - MODERN WPC  
BOARD**