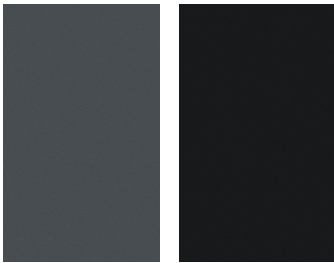
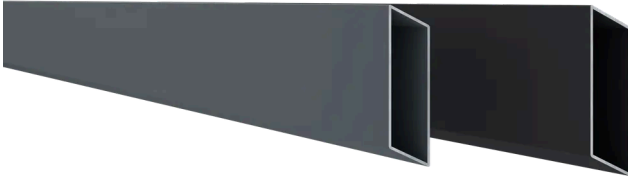
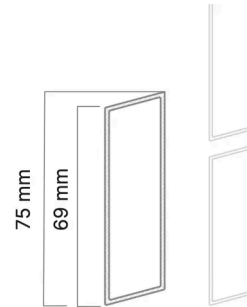


BOSTON - RHOMBUS ALUMINIUM BOARD

- Can be combined with other boards in the BOSTON concept
- Adjustable spacing with spacers
- Anthracite grey and black
- Powder-coating Qualicoat® and Qualimarine® with textured effect



Anthracite grey RAL7016 Black RAL9005



A louvered aluminium slat

The RHOMBUS aluminium slat has a parallelepiped cross-section. It offers a louvered effect. RHOMBUS louvers are spaced by 10°-angled, 10mm-high spacers. RHOMBUS louvers are available in anthracite grey and black, with Qualicoat® and Qualimarine®-certified powder coating.



Environment

LIFETIME	> 20 years
GHG EMISSIONS	8.21 (GES)
RECYCLED MATERIAL	Aluminium
END OF LIFE RECYCLABILITY	10 %



Characteristics

Cuttable	oui
Main material	Aluminium
Material thickness (mm)	1.4
Finishing	Coating
Way of fixation	Horizontal installation
Useful height (mm)	75
	Fencing

Logistics Data

REF	EAN CODE	DESIGNATION	WEIGHT (KG)	PACK 1	PACK 2
2721	8720365374210	BOSTON - Aluminum board Rhombus - 21x75x1780mm - Grey RAL7016	1.2	200	1
2888	3700421819300	BOSTON - Aluminum board Rhombus - 21x75x1780mm - Grey RAL7016	1.2	200	1