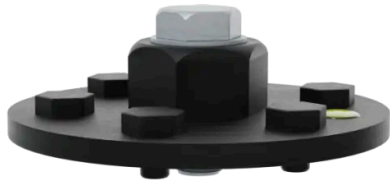


M41 ADAPTATOR FOR FOUNDATION SCREW

- Central clamping screw
- 41 mm socket
- Integrated spirit level
- Suitable for impact wrenches type Milwaukee or Makita
- Minimum required power 10 kN



Adapter connecting the drilling tool to the foundation screw

The 41 mm socket adapter allows connecting the foundation screw with the drilling tool for implementation in the ground. 1 central nut and 6 peripheral lugs secure the adapter on the screw.



Environment

LIFETIME	> 20 years
GHG EMISSIONS	3.546 (GES)
RECYCLED MATERIAL	Galvanized steel
END OF LIFE RECYCLABILITY	0 %



M41 ADAPTATOR FOR FOUNDATION SCREW

Characteristics

	Fasteners
Main material	Galvanised steel

Logistics Data

REF	EAN CODE	DESIGNATION	WEIGHT (KG)	PACK 1	PACK 2
FD0616	3700421806164	SPIRAL - M41 adaptator for bolt machine	1.35	200	10