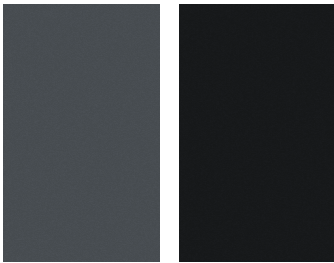
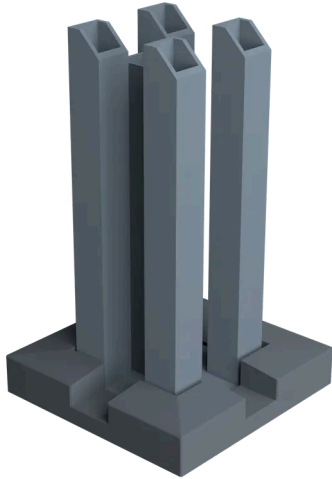
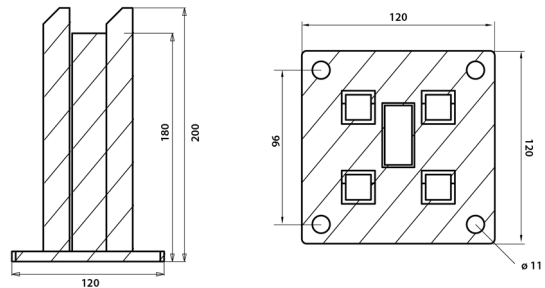


BOSTON - STEEL PLATE FOR 75X75MM POST

- 8mm thick base plate
- Supplied with base cap
- Drilling ∅11mm, floor fixing at installer's discretion



Anthracite grey RAL7016 Black RAL9005



A strong base plate for the 75×75mm post

The epoxy-lacquered galvanized steel plate is used to secure the 75×75mm post to a slab. It is designed to withstand winds of 90 km/h for a panel height of 1m80, and 120 km/h for a panel height of 1m20. Supplied with a polymer cover plate. Fixes with four 10mm diameter screw anchors or dowels (not supplied).



Environment

LIFETIME	> 20 years
GHG EMISSIONS	3.546 (GES)
RECYCLED MATERIAL	Galvanized steel
END OF LIFE RECYCLABILITY	0 %



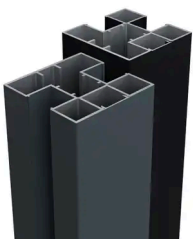
Characteristics

Main material	Galvanised steel
Finishing	Coating
Installation type	To screw
	Fencing

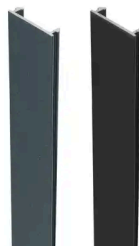
Logistics Data

REF	EAN CODE	DESIGNATION	WEIGHT (KG)	PACK 1	PACK 2
2497	3700421811434	BOSTON - Steel anchor 120x120x200mm - Grey cover RAL7016	2.5	87	1
2881	8720365375941	BOSTON - Steel anchor 120x120x200mm - Black cover RAL9005	2.5	87	1

Associated products



BOSTON - ALUMINIUM POST
75X75MM



BOSTON - ALUMINIUM
FINISHING STRIP 6X24MM



BOSTON - WALL PLATE
SUPPORT