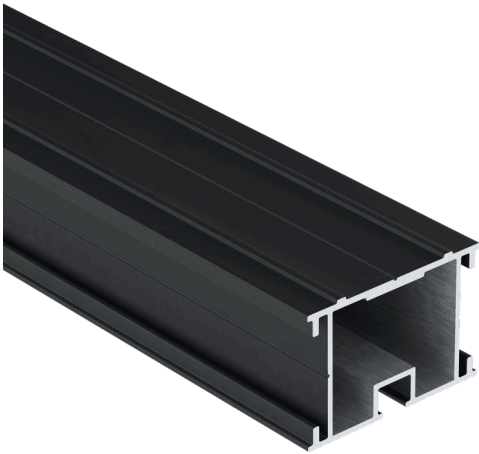


STRUCTURAL – ALU JOIST 40X60MM



- ◆ LIFESPAN – ROT-PROOF
- ◆ LIGHTWEIGHT AND ROBUST
- ◆ PRECISION AND REGULARITY
- ◆ ONE SIDE DECKING, ONE SIDE PAVING
- ◆ BLACK LACQUER RAL 9005

◆ Aluminium joist 40x60 mm for terrace

The STRUCTURAL system ensures a rot-proof structure with unparalleled lifespan. Unlike wood, aluminum is not subject to any deformation or deterioration of its qualities over time. As load-bearing elements, STRUCTURAL joists are very suitable for installing elevated structures on pedestals or foundation screws. The system's modularity allows both installation of composite or wood decking boards and laying of porcelain stoneware paving.



◆ Environment

LIFETIME	> 20 years
GHG EMISSIONS	8.21 (GES)
RECYCLED MATERIAL	Aluminium
END OF LIFE RECYCLABILITY	10 %



STRUCTURAL – ALU JOIST 40X60MM

◆ Characteristics

Cuttable	oui
Main material	Aluminium
Material thickness (mm)	2
Finishing	Coating
null	Decking
Linear mass (kg/m)	undefined
Kind of installation	Clipsable

◆ Logistics Data

REF	EAN CODE	DESIGNATION	WEIGHT (KG)	PACK 1	PACK 2
2853	3700421819003	STRUCTURAL – Aluminum joist 40x60x2300mm	2.6		
2846	3700421818921	STRUCTURAL – Aluminum joist 40x60x4000mm	4.6		